

Pneumatic Water Well Drilling Rig

气 动 水 井 钻 机

Power head

The main shaft has a large diameter and strong slag discharge capacity.



Hydraulic leg

Configure four hydraulic high support legs

企业简介

Company Profile

Jinzhou Shitan Machinery Co., Ltd. is a company specializing in the production and processing of pneumatic water well drilling rig, crawler drilling rig, various crawler chassis, mud pumps, transport vehicles and ect. It is one of the excellent manufacturers of similar products in North China with strong technical force, modern production equipment and complete QC system.

Main products of Jinzhou Shitan Machinery Co., Ltd.:

**Pneumatic water well drilling rig; 180/200/260/300s/350/350s/400/450/450s
/500S/600S/800S**

Air compressor: Kaishan air compressor, Zhigao air compressor, liufuda air compressor, Atlas Copco, Youli etc

Hydraulic tower, folding tower, 30 impact drill track chassis, triangular tower and other specifications of track chassis can be customized.

Bw150, bw160, bw200, bw250 and other series mud pumps.

Drilling rig: xy-1/xy-1A/XY-2/gk180/gk200/gy150/gy200/ST30/ST50

Assembly: gearbox assembly, rotatory assembly, winch assembly, reducer assembly and pump body assembly of various drilling rigs.

Drilling tools: such as casing joint, casing coupling, drill pipe joint, casing core pipe, extractor, automatic drop hammer, sampler, wrench fork, pad fork, lock joint, alloy bit, composite bit, diamond bit and so on.

厂房实拍

Factory real shot



目录

Company Profile.....1

Factory shooting2

Directory3

ST 180 Pneumatic Water Well Drilling Rig1

ST 200 Pneumatic Water Well Drilling Rig2

ST 260 Pneumatic Water Well Drilling Rig3

ST 300 Pneumatic Water Well Drilling Rig4

ST 300s Pneumatic Water Well Drilling Rig5

ST 350 Pneumatic Water Well Drilling Rig6

ST 350s Pneumatic Water Well Drilling Rig7

ST 450 Pneumatic Water Well Drilling Rig8

ST 450s Pneumatic Water Well Drilling Rig9

ST 500s Pneumatic Water Well Drilling Rig10

ST 600s Pneumatic Water Well Drilling Rig11

ST 800s Pneumatic Water Well Drilling Rig12

ST 1000 Pneumatic Water Well Drilling Rig13

Kaishan Air Compressor14

Zhigao Air Compressor.....15

Liufuda Air Compressor.....16

DTH impactor.....17

DTH drilling bit.....18

Drilling rods.....19

Eccentric drilling tool.....20

.....21

单击此处输入文字。.....22

.....23

.....24

.....25

.....26

.....27

.....28

ST 180 RUBBER CRAWLER MOUNTED WATER WELL DRILLING RIG



Application Scope ; It is suitable for industrial and civil drilling and geothermal drilling Large hole diameter, deep drilling, fast footage, flexible movement and wide application area

Main technical parameters

| | |
|--|---|
| Drilling Depth | 180m |
| Drilling Hole Diameter | 105-305mm |
| Working wind pressure | 1.25-3.5Mpa |
| Gas consumption | 16-55m ³ /min |
| Drill pipe length | 3m |
| Drill pipe diameter | 76mm |
| Axial pressure | 4T |
| Lifting force | 18T |
| Lifting speed | 20m/min |
| Fast forward speed | 40m-min |
| Maximum turning torque | 4900/NM |
| Maximum rotation speed | 85/170r/min |
| Lifting force of small auxiliary winch | 1.2T |
| High leg travel | 1.35m |
| Footage efficiency | 10-35m/h |
| Walking speed | 2.5km/h |
| Climbing degree | 30 |
| Weight | 4.5T |
| Overall dimension | 3.4*1.8*2.3m |
| Adaptive conditions | Loose layer and bedrock |
| Engine | Xidong 55KW |
| Drilling method | top drive hydraulic rotation and propulsion, DTH impactor or Mud drilling |

Jinzhou City Shitan Machinery Equipment CO. LTD.
 晋州市石探机械设备有限公司

ST 200 RUBBER CRAWLER MOUNTED WATER WELL DRILLING RIG



ST 200 RUBBER CRAWLER MOUNTED WATER WELL DRILLING RIG

Application Scope ; It is suitable for industrial and civil drilling and geothermal drilling Large hole diameter, deep drilling, fast footage, flexible movement and wide application area

| | |
|--|---|
| Drilling Depth | 200m |
| Drilling Hole Diameter | 105-305mm |
| Working wind pressure | 1.25-3.5Mpa |
| Gas consumption | 16-55m ³ /min |
| Drill pipe length | 3m |
| Drill pipe diameter | 76mm |
| Axial pressure | 4T |
| Lifting force | 18T |
| Lifting speed | 20m/min |
| Fast forward speed | 40m-min |
| Maximum turning torque | 5900/NM |
| Maximum rotation speed | 85/170r/min |
| Lifting force of small auxiliary winch | 1.2T |
| High leg travel | 1.35m |
| Footage efficiency | 10-35m/h |
| Walking speed | 2.5km/h |
| Climbing degree | 30 |
| Weight | 5.5T |
| Overall dimension | 3.6m × 1.8m × 2.3m |
| Adaptive conditions | Loose layer and bedrock |
| Engine | Xidong 65KW |
| Drilling method | top drive hydraulic rotation and propulsion, DTH impactor or Mud drilling |

ST 260 CRAWLER MOUNTED WATER WELL DRILLING RIG



Application Scope ; It is suitable for industrial and civil drilling and geothermal drilling Large hole diameter, deep drilling, fast footage, flexible movement and wide application area

| | |
|--|---|
| Drilling Depth | 260m |
| Drilling Hole Diameter | 105-305mm |
| Working wind pressure | 1.25-3.5Mpa |
| Gas consumption | 16-55m ³ /min |
| Drill pipe length | 3m |
| Drill pipe diameter | 76mm |
| Axial pressure | 4T |
| Lifting force | 20T |
| Lifting speed | 20m/min |
| Fast forward speed | 40m-min |
| Maximum turning torque | 5900/NM |
| Maximum rotation speed | 85/170r/min |
| Lifting force of small auxiliary winch | 1.2T |
| High leg travel | 1.35m |
| Footage efficiency | 10-35m/h |
| Walking speed | 2.5km/h |
| Climbing degree | 30 |
| Weight | 6T |
| Overall dimension | 4m×1.8m×2.3m |
| Adaptive conditions | Loose layer and bedrock |
| Engine | Xidong 73KW |
| Drilling method | top drive hydraulic rotation and propulsion, DTH impactor or Mud drilling |

ST 300 CRAWLER MOUNTED WATER WELL DRILLING RIG



Application Scope ; It is suitable for industrial and civil drilling and geothermal drilling Large hole diameter, deep drilling, fast footage, flexible movement and wide application area

| | |
|--|---|
| Drilling Depth | 300m |
| Drilling Hole Diameter | 105-305mm |
| Working wind pressure | 1.25-3.5Mpa |
| Gas consumption | 16-55m ³ /min |
| Drill pipe length | 6m |
| Drill pipe diameter | 89mm |
| Axial pressure | 4T |
| Lifting force | 22T |
| Lifting speed | 20m/min |
| Fast forward speed | 40m-min |
| Maximum turning torque | 8900 /NM |
| Maximum rotation speed | 85/170r/min |
| Lifting force of small auxiliary winch | 1.2T |
| High leg travel | 1.35m |
| Footage efficiency | 10-35m/h |
| Walking speed | 2.5km/h |
| Climbing degree | 30 |
| Weight | 8T |
| Overall dimension | 4.8m × 1.9m × 2.35m |
| Adaptive conditions | Loose layer and bedrock |
| Engine | Yuchai 78KW |
| Drilling method | top drive hydraulic rotation and propulsion, DTH impactor or Mud drilling |

ST 300s CRAWLER MOUNTED WATER WELL DRILLING RIG



Application Scope ; It is suitable for industrial and civil drilling and geothermal drilling Large hole diameter, deep drilling, fast footage, flexible movement and wide application area

| | |
|--|---|
| Drilling Depth | 300s m |
| Drilling Hole Diameter | 105-305mm |
| Working wind pressure | 1.25-3.5Mpa |
| Gas consumption | 16-55m ³ /min |
| Drill pipe length | 6m |
| Drill pipe diameter | 89mm |
| Axial pressure | 4T |
| Lifting force | 24T |
| Lifting speed | 20m/min |
| Fast forward speed | 40m-min |
| Maximum turning torque | 8900 |
| Maximum rotation speed | 85/170r/min |
| Lifting force of small auxiliary winch | 1.2T |
| High leg travel | 1.35m |
| Footage efficiency | 10-35m/h |
| Walking speed | 2.5km/h |
| Climbing degree | 30 |
| Weight | 8T |
| Overall dimension | 4.8m × 1.9m × 2.35m |
| Adaptive conditions | Loose layer and bedrock |
| Engine | Yuchai 85KW |
| Drilling method | top drive hydraulic rotation and propulsion, DTH impactor or Mud drilling |

ST 350 CRAWLER MOUNTED WATER WELL DRILLING RIG



Application Scope ; It is suitable for industrial and civil drilling and geothermal drilling Large hole diameter, deep drilling, fast footage, flexible movement and wide application area

| | |
|--|---|
| Drilling Depth | 350m |
| Drilling Hole Diameter | 105-305mm |
| Working wind pressure | 1.25-3.5Mpa |
| Gas consumption | 16-55m ³ /min |
| Drill pipe length | 6m |
| Drill pipe diameter | 89mm |
| Axial pressure | 4T |
| Lifting force | 24T |
| Lifting speed | 20m/min |
| Fast forward speed | 40m-min |
| Maximum turning torque | 8900/NM |
| Maximum rotation speed | 85/170r/min |
| Lifting force of small auxiliary winch | 1.2T |
| High leg travel | 1.35m |
| Footage efficiency | 10-35m/h |
| Walking speed | 2.5km/h |
| Climbing degree | 30 |
| Weight | 9T |
| Overall dimension | 5.2×2×2.35 米 |
| Adaptive conditions | Loose layer and bedrock |
| Engine | Yuchai 91KW |
| Drilling method | top drive hydraulic rotation and propulsion, DTH impactor or Mud drilling |

Jinzhou City Shitan Machinery Equipment CO. LTD.
 晋州市石探机械设备有限公司

ST 350s CRAWLER MOUNTED WATER WELL DRILLING RIG



Application Scope ; It is suitable for industrial and civil drilling and geothermal drilling Large hole diameter, deep drilling, fast footage, flexible movement and wide application area

| | |
|--|---|
| Drilling Depth | 350m |
| Drilling Hole Diameter | 105-305mm |
| Working wind pressure | 1.25-3.5Mpa |
| Gas consumption | 16-55m ³ /min |
| Drill pipe length | 6m |
| Drill pipe diameter | 89mm |
| Axial pressure | 4T |
| Lifting force | 26T |
| Lifting speed | 20m/min |
| Fast forward speed | 40m-min |
| Maximum turning torque | 9900/NM |
| Maximum rotation speed | 85/170r/min |
| Lifting force of small auxiliary winch | 1.2T |
| High leg travel | 1.35m |
| Footage efficiency | 10-35m/h |
| Walking speed | 2.5km/h |
| Climbing degree | 30 |
| Weight | 9T |
| Overall dimension | 5.2×2×2.35 米 |
| Adaptive conditions | Loose layer and bedrock |
| Engine | Yuchai Guosan 113KW |
| Drilling method | top drive hydraulic rotation and propulsion, DTH impactor or Mud drilling |

Jinzhou City Shitan Machinery Equipment CO. LTD.
 晋州市石探机械设备有限公司

ST 400 CRAWLER MOUNTED WATER WELL DRILLING RIG

Application Scope ; It is suitable for industrial and civil drilling and geothermal drilling Large hole diameter, deep drilling, fast footage, flexible movement and wide application area



| | |
|--|---|
| Drilling Depth | 400m |
| Drilling Hole Diameter | 105-305mm |
| Working wind pressure | 1.25-3.5Mpa |
| Gas consumption | 16-55m ³ /min |
| Drill pipe length | 6m |
| Drill pipe diameter | 89mm |
| Axial pressure | 4T |
| Lifting force | 28T |
| Lifting speed | 20m/min |
| Fast forward speed | 40m-min |
| Maximum turning torque | 9900/NM |
| Maximum rotation speed | 85/170r/min |
| Lifting force of small auxiliary winch | 1.2T |
| High leg travel | 1.35m |
| Footage efficiency | 10-35m/h |
| Walking speed | 2.5km/h |
| Climbing degree | 30 |
| Weight | 9T |
| Overall dimension | 5.6m × 2m × 2.5m |
| Adaptive conditions | Loose layer and bedrock |
| Engine | Yuchai 92KW six cylinder engine |
| Drilling method | top drive hydraulic rotation and propulsion, DTH impactor or Mud drilling |

ST 450 CRAWLER MOUNTED WATER WELL DRILLING RIG



Application Scope ; It is suitable for industrial and civil drilling and geothermal drilling Large hole diameter, deep drilling, fast footage, flexible movement and wide application area

| | |
|--|---|
| Drilling Depth | 450m |
| Drilling Hole Diameter | 105-325mm |
| Working wind pressure | 1.25-3.5Mpa |
| Gas consumption | 16-55m ³ /min |
| Drill pipe length | 6m |
| Drill pipe diameter | 89mm |
| Axial pressure | 4T |
| Lifting force | 30T |
| Lifting speed | 20m/min |
| Fast forward speed | 47m-min |
| Maximum turning torque | 14000/NM |
| Maximum rotation speed | 85/170r/min |
| Lifting force of small auxiliary winch | 1.2T |
| High leg travel | 1.35m |
| Footage efficiency | 10-35m/h |
| Walking speed | 2.5km/h |
| Climbing degree | 30 |
| Weight | 10T |
| Overall dimension | 6.2m × 2.1m × 2.5m |
| Adaptive conditions | Loose layer and bedrock |
| Engine | Yuchai 92KW six cylinder engine |
| Drilling method | top drive hydraulic rotation and propulsion, DTH impactor or Mud drilling |

Jinzhou City Shitan Machinery Equipment CO. LTD.
晋州市石探机械设备有限公司

ST 500S CRAWLER MOUNTED WATER WELL DRILLING RIG



Application Scope ; It is suitable for industrial and civil drilling and geothermal drilling Large hole diameter, deep drilling, fast footage, flexible movement and wide application area

| | |
|--|---|
| Drilling Depth | 500m |
| Drilling Hole Diameter | 105-400mm |
| Working wind pressure | 1.25-3.5Mpa |
| Gas consumption | 16-55m ³ /min |
| Drill pipe length | 6m |
| Drill pipe diameter | 89mm/102mm |
| Axial pressure | 6T |
| Lifting force | 36T |
| Lifting speed | 20m/min |
| Fast forward speed | 47m-min |
| Maximum turning torque | 14000 |
| Maximum rotation speed | 80/160r/min |
| Lifting force of small auxiliary winch | 3T |
| High leg travel | 1.35m |
| Footage efficiency | 10-35m/h |
| Walking speed | 2.5km/h |
| Climbing degree | 21 |
| Weight | 12T |
| Overall dimension | 6.2m × 2.1m × 2.5m |
| Adaptive conditions | Loose layer and bedrock |
| Engine | CUMMINS 132 KW six cylinder engine |
| Drilling method | top drive hydraulic rotation and propulsion, DTH impactor or Mud drilling |

ST 600S CRAWLER MOUNTED WATER WELL DRILLING RIG



Application Scope ; It is suitable for industrial and civil drilling and geothermal drilling Large hole diameter, deep drilling, fast footage, flexible movement and wide application area

| | |
|--|---|
| Drilling Depth | 600m |
| Drilling Hole Diameter | 105-400mm |
| Working wind pressure | 1.25-3.5Mpa |
| Gas consumption | 16-55m ³ /min |
| Drill pipe length | 6m |
| Drill pipe diameter | 89mm/102mm |
| Axial pressure | 6T |
| Lifting force | 38T |
| Lifting speed | 20m/min |
| Fast forward speed | 47m-min |
| Maximum turning torque | 14000 |
| Maximum rotation speed | 80/160r/min |
| Lifting force of small auxiliary winch | 3T |
| High leg travel | 1.35m |
| Footage efficiency | 10-35m/h |
| Walking speed | 2.5km/h |
| Climbing degree | 21 |
| Weight | 14T |
| Overall dimension | 6.2m × 2.1m × 2.5m |
| Adaptive conditions | Loose layer and bedrock |
| Engine | Yuchai 176 KW six cylinder engine |
| Drilling method | top drive hydraulic rotation and propulsion, DTH impactor or Mud drilling |

ST 800S CRAWLER MOUNTED WATER WELL DRILLING RIG



Application Scope ; It is suitable for industrial and civil drilling and geothermal drilling Large hole diameter, deep drilling, fast footage, flexible movement and wide application area

| | |
|--|---|
| Drilling Depth | 800m |
| Drilling Hole Diameter | 105-500mm |
| Working wind pressure | 1.25-3.5Mpa |
| Gas consumption | 16-55m ³ /min |
| Drill pipe length | 6m |
| Drill pipe diameter | 102mm |
| Axial pressure | 6T |
| Lifting force | 42T |
| Lifting speed | 20m/min |
| Fast forward speed | 47m-min |
| Maximum turning torque | 22000 |
| Maximum rotation speed | 80/160r/min |
| Lifting force of small auxiliary winch | 3T |
| High leg travel | 1.35m |
| Footage efficiency | 10-35m/h |
| Walking speed | 2.5km/h |
| Climbing degree | 21 |
| Weight | 18T |
| Overall dimension | 6.2m × 2.2m × 2.5m |
| Adaptive conditions | Loose layer and bedrock |
| Engine | Yuchai 190 KW six cylinder engine |
| Drilling method | top drive hydraulic rotation and propulsion, DTH impactor or Mud drilling |

ST 1000 CRAWLER MOUNTED WATER WELL DRILLING RIG



Application Scope ; It is suitable for industrial and civil drilling and geothermal drilling Large hole diameter, deep drilling, fast footage, flexible movement and wide application area

| | |
|--|---|
| Drilling Depth | 1000m |
| Drilling Hole Diameter | 105-500mm |
| Working wind pressure | 1.25-3.5Mpa |
| Gas consumption | 16-55m ³ /min |
| Drill pipe length | 6m |
| Drill pipe diameter | 102mm/114mm |
| Axial pressure | 6T |
| Lifting force | 45T |
| Lifting speed | 20m/min |
| Fast forward speed | 47m-min |
| Maximum turning torque | 22000 |
| Maximum rotation speed | 80/160r/min |
| Lifting force of small auxiliary winch | 3T |
| High leg travel | 1.35m |
| Footage efficiency | 10-35m/h |
| Walking speed | 2.5km/h |
| Climbing degree | 21 |
| Weight | 20T |
| Overall dimension | 6.2m × 2.2m × 2.5m |
| Adaptive conditions | Loose layer and bedrock |
| Engine | Kangmingsi 242 KW six cylinder engine |
| Drilling method | top drive hydraulic rotation and propulsion, DTH impactor or Mud drilling |

Kaishan Air Compressor



Precautions for using Kaishan screw air compressor

1. New machine debugging must be carried out by our company's designated or recognized debugging personnel.
2. When starting up for the first time or when there is a change in the power cord, it is necessary to pay attention to whether the motor rotation direction is correct to prevent the machine head from losing oil and burning.
3. The placement of the air compressor must be on a flat ground, and the ground must not be soft soil.
4. When piping the main pipeline, the pipeline must have a downward inclination of $1^{\circ} \sim 2^{\circ}$.
5. When piping, it is strictly prohibited for welding sparks to fall into the air compressor to avoid burning out certain components inside the compressor.
6. When distributing power, choose the correct power line diameter and confirm the correctness of the voltage. Air switches and fuses must be installed on the power supply lines
Safety devices such as broken wires.
7. We must use the specialized oil for screw air compressors recommended by our factory, and it is strictly prohibited to mix lubricating oils of different grades.
8. When adding lubricating oil, it should be confirmed that there is no pressure in the system before opening the oil filler cap.
9. During the operation of the unit, do not loosen or remove any pipeline accessories, joints, and components. The unit is filled with high-pressure and high-temperature liquid, which can lead to
Causing serious personal injury accidents.

Kaishan Air Compressor Specification:

| Model | Exhaust weight (m/min) | Exhaust pressure (Mpa) | Supporting diesel engine model | Wight (kg) | Size (mm) |
|-------------|------------------------|------------------------|--------------------------------|------------|----------------|
| KSZJ-15/145 | 15 | 145 | YC6A18OZ-T21 | 2500 | 3000-1520-1800 |
| KSZ-18/17 | 18 | 17 | YC6A260L-20 | 3200 | 3000-1800-2000 |
| KSZJ1918 | 19 | 18 | | | |
| KSZJ23/23 | 23 | 23 | YC6MK340L-K30 | 4850 | 3500-1950-2030 |
| KS2J 29/230 | 29 | 23 | YC6M400L-K20 | 5000 | 3500-1950-2030 |
| KSZJ-9125 | 31 | 25 | YC6K500-K30 | 6000 | 4000-2100-2100 |
| KSZJ-3425 | 24 | 25 | YC6K550-K30 | 6800 | 4250-2100-2200 |
| KSZ4-24/17 | 24 | 17 | YC6MK340L-K30 | 4500 | 3500-1950-2030 |

Zhigao Air Compressor



Zhigao Air Compressor Specification

| Model | Working pressure (Bar) | Capacity (m3/min) | Diesel engine brand | Power (kw) | Air end |
|-------|---------------------------|----------------------|------------------------|---------------|--------------|
| S60 | 18 | 18 | YUCHAI | 162 | Single stage |
| S85T | 22 | 24 | YUCHAI | 228 | Two stage |
| S95CD | 24 | 29 | YUCHAI | 295 | Two stage |
| S98D | 24 | 30 | YUCHAI | 295 | Two stage |
| S100D | 25 | 30 | YUCHAI | 310 | Two stage |
| S120D | 27 | 37 | XICHAI | 412 | Two stage |

Liufuda Air Compressor



Excellent overall performance·Atlas Cotec original host, manufactured in Belgium, with high compression efficiency.
 Compliant with China's third-generation diesel engine emission standard·
 High configuration diesel engine drive, reliable and powerful performance. energy conservation·
 Compared to similar products in the market, it saves more than 5% energy.
 Automatically adjust the load of the vehicle according to the user's working conditions

Liufuda Air Compressor Parameter

| Model | Working Pressure Bar | Capacity m ² /min | Engine Power KW | Diesel capacity L(gal) | Engine brand | Engine Model | Pressure Capacity (A) | Weight KG | Overall Size L*W*H(mm) (exclude walking parts) |
|-----------|----------------------|------------------------------|-----------------|------------------------|---------------|----------------|-----------------------|-----------|--|
| LUY140-14 | 14 | 14 | 129 | 180 | Yuchai | YC6J175-H301 | 23 | 2050 | 2680*1540*1637 |
| LUY150-15 | 15 | 15 | 151 | 250 | | YC6A205-H300 | 32 | 2350 | |
| LUY160-17 | 7 | 16 | 176 | | | YC6A240-H301 | | | |
| LUY180-20 | 20 | 18 | 194 | 325 | CUMMINS | QSC8.3-C260-30 | 60 | 3510 | 3280*1670*1870 |
| LUY230-14 | 14 | 23 | 242 | 470 | | OSL8.9-C325-30 | 65 | 4235 | 3985*1800*2200 |
| LUY250-12 | 12 | 25 | | | | | | | |
| LUY270-10 | 10 | 27 | | | | | | | |
| LUY290-9 | 8.6 | 29 | | | | | | | |
| LUY215-21 | 21 | 21.5 | 512 | 75 | | 4250 | | | |
| LUY350-25 | 25 | 35 | 372 | 780 | | QSZ13-C500-30 | 100 | 5150 | 4486*2100*2180 |
| LUY350-30 | 30 | 35 | 410 | | QSZ13-C550-30 | 105 | | | |

DHT Impactor



| DTH Impactor | Size (mm) |
|--------------|-------------|
| Model | 2"impactor |
| | 3"impactor |
| | 4"impactor |
| | 5"impactor |
| | 6"impactor |
| | 7"impactor |
| | 8"impactor |
| | 10"impactor |
| | 12"impactor |



DTH Bits



| Description | Size (mm) |
|--------------------------------|------------------------------|
| Diamond bit, black diamond bit | 2" impactor 76-90mm bits |
| | 3" impactor 85-110mm bits |
| | 4" impactor 105-150mm bits |
| | 5" impactor 130-216mm bits |
| | 6" impactor 152-254mm bits |
| | 7" impactor 180-254mm bits |
| | 8" impactor 190-350mm bits |
| | 10" impactor 240-400 mm bits |
| | 12" impactor 305-400mm bits |

Drill Pipe/Joints



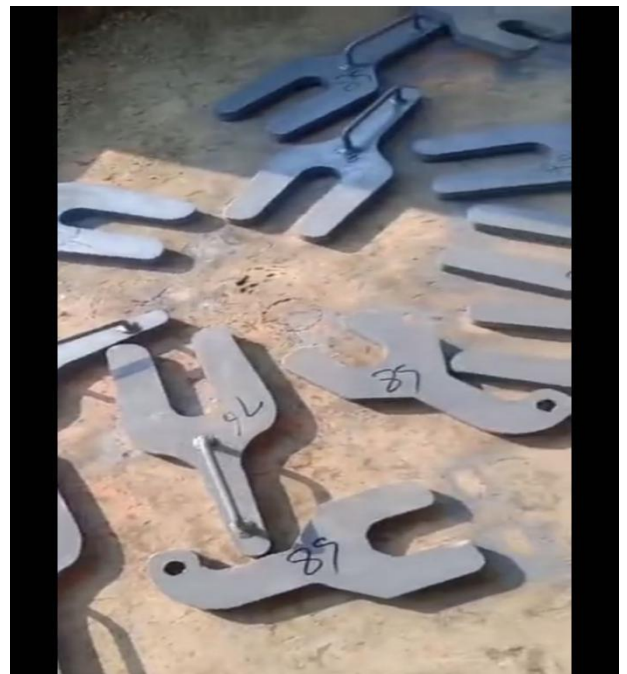
| Description | Size (mm) |
|-------------|-----------|
| Drill Pipe | 60mm |
| | 76mm |
| | 89mm |
| | 102mm |
| | 114mm |

Eccentric Drilling Tool



Impactor Adapter

Fork



Mud Pump、Water Tap



Real Shot

